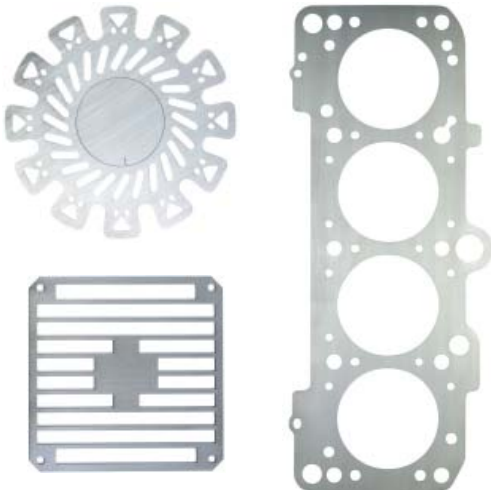
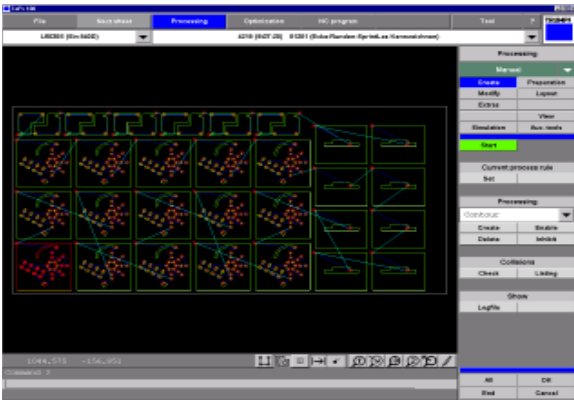




TruTops Laser Programming



COURSE DESCRIPTION

The TruTops Laser course provides students with the essential knowledge and skills required to successfully program TRUMPF laser machines. Students will develop a working knowledge of TruTops Laser programming software by learning how to accurately create, import and export part drawings, properly program single parts, and nest parts to maximize material utilization and machine processes. Upon completion of this course, students will be able to draw parts using the TruTops Laser drawing package, nest with TruTops Laser manual and automatic nesters, process a job with appropriate cutting technologies and logic, and create machine code suitable for TRUMPF flatbed laser machines.

TARGET AUDIENCE

Machine Programmers or operators with programming responsibility

PREREQUISITES

Basic PC skills are a must. Basic blueprint-reading skills are recommended. Fundamental drawing skills using a CAD package and NC programming knowledge are a plus.

COURSE DURATION

5 days

OBJECTIVES

- Discuss laser cutting principles and processes.
- Identify various types of laser cutting and machine parameters.
- Utilize databases relative to the programming systems and machine.
- Identify major interface components and their functions.
- Program with the Drawing module.
- Program with the Nesting module.
- Discuss the tool path and interaction with the driven tool path.
- Identify proper databases (technology tables) for various types of cutting.
- Apply logic (rule) of contour approaches and withdrawals.
- Generate NC code.



Training Department
c/o TRUMPF, Inc.
111 Hyde Road
Farmington, CT 06032

Contact Kathy Coco at 860-255-6068
training@us.trumpf.com

COURSE OUTLINE

- Laser cutting principles and processes
- Types of laser cutting and machine parameters
- Databases relative to the programming system and machine
- Overview of
 - TruTops Laser theory
 - Components on the user interface
 - Programming sequence
- Drawing module
 - Loading and importing dxf files and batch dxf conversions
 - Creating and editing part drawings utilizing construction geometry
 - Creating and editing basic CAD drawing
 - Creating and editing standard patterns
 - Saving drawings

CUSTOMER SERVICES

COURSE OUTLINE